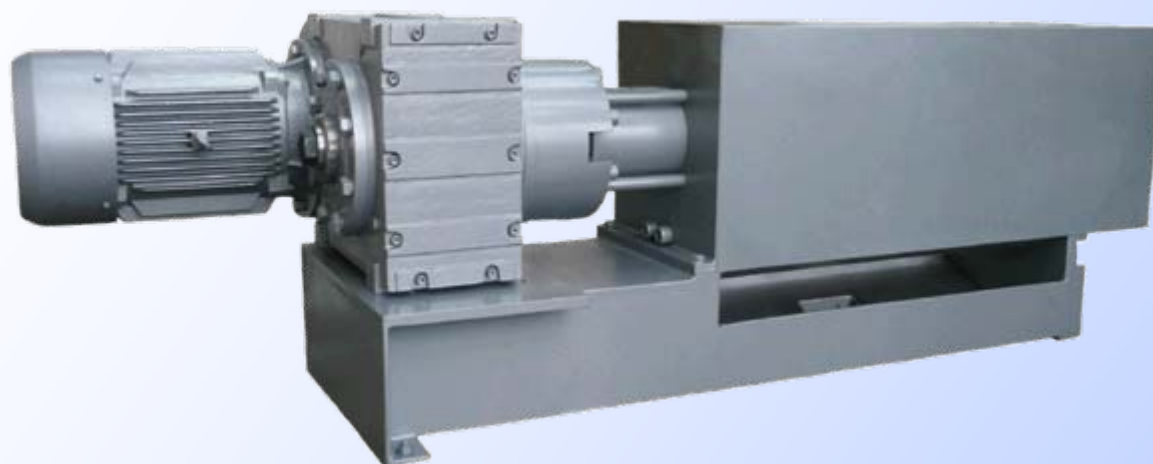


The Minimax Press

Specification Sheet



Specification:

Nominal throughput:	500 kg/hr Pre-Press 350 kg/hr Full Press
Installed power:	15kW

Size:

Length:	2500mm
Width:	850mm
Height:	700mm
Net weight:	1 Tonne

Duty:

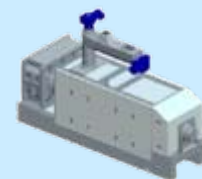
The Minimax press is capable of cold pressing most oil seeds without pre-treatment*. Its size and tight tolerances means that it is very efficient at rupturing the structures of oil-bearing materials and extracting the oil. Although designed to work on cold feed materials it is perfectly suited to the processing of cooked and prepared feed materials, where the pre-treatment will enable greater oil yields than is possible with the press alone.

The throughput of the Minimax screw press is sufficient to form the basis of commercial viable plants that will be used in specialist applications, where small scale extraction of high value products is required. The cake from the press is perfectly suited to either further mechanical extraction or solvent extraction. Typically milling defects of press cake below 1% are achievable.

* Fibrous feeds or feeds with large particle sizes will require pre-breaking before feeding to a Minimax.

Performance:

Cold Press,	60 – 70% - Pre-Press
Prepared Seed	75 – 90% - Full Press



The Minimax Press

Specification Sheet

Features & Options:

• Compression Zones:

- This design is a scaled down replica of our 800 Series press. With this length it is possible to fit four compression zones into the worm assembly. This leads to a high efficiency of oil extraction without causing high pressures that lead to high powers and excessive wear.

• Cage Assembly:

- The cage is split on the vertical centre line and bolted together. It consists of three 300mm lined sections with lining bars that can be spaced according to seed type. These bars are clamped in place using shoe frame and knife bars. The knife bars provide anti-rotation to ensure smooth flow of material through the drained area.

• Adjustable Worm Assembly:

- The worm assembly consists of separate parts that can be easily removed from the shaft. Compression pieces, or “humps”, can be altered to suit any feed material.

• Drive Arrangement:

- The drive is a parallel shaft, helical gearmotor unit. This is a compact unit that keeps the overall size of the machine down whilst also being an economical solution.

• Thrust Housing:

- The Minimax is fitted with a thrust assembly external to the gearbox. As such the machine will withstand the heavy duties of the more fibrous seeds without reducing the life of the gearbox itself.

• Fully Welded Frame:

- This provides maximum strength and allows for simple installation of the press.

• Cage Lowering Pins:

- The cage can be dropped a full 90 degrees for ease of working when performing routine maintenance.

