

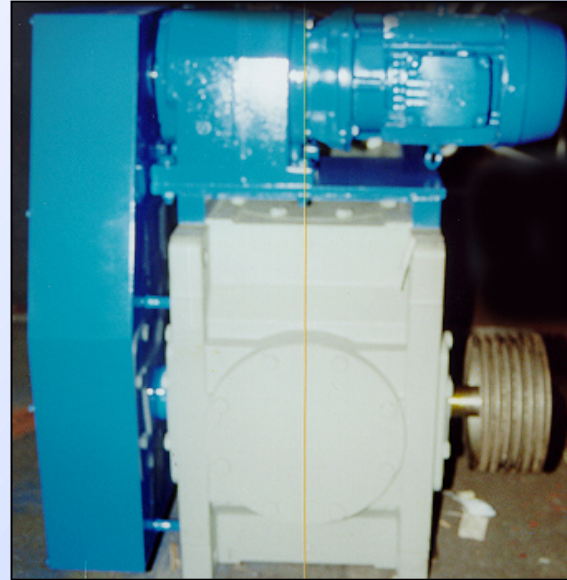
The Barring Motor System

A Sterling Series Option

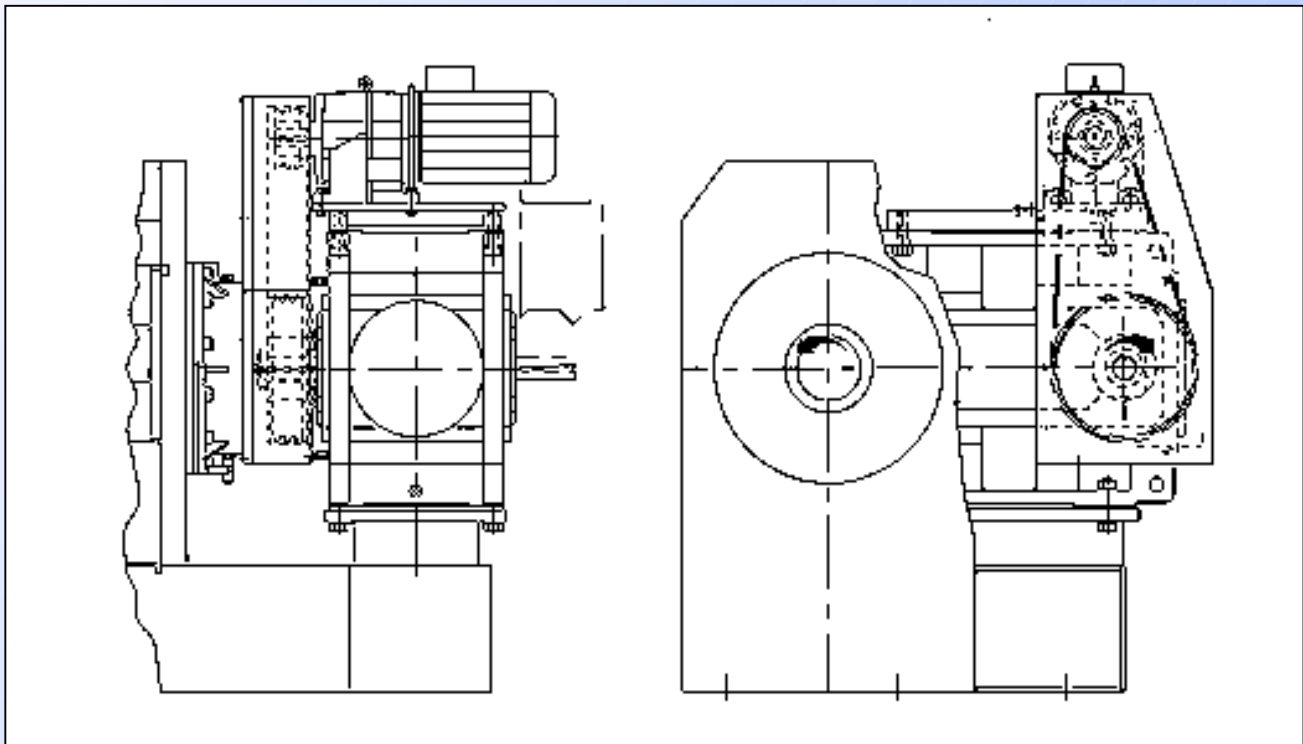
The **Barring Motor System** is unique to Rosedowns Presses and suitable for fitting across the Sterling Series of Presses.

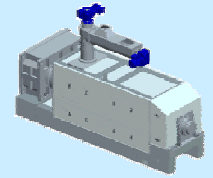
The Barring Motor is an auxiliary drive system, that is used in the event of failure of the main power supply. It is used to empty the Press of feed material before it “sets” hard and necessitates opening of the Cages.

The system is driven by a low powered geared motor unit, that is sized to drive the Press slowly at its full torque rating. The GMU is selected to be suitable for running off a temporary power supply.



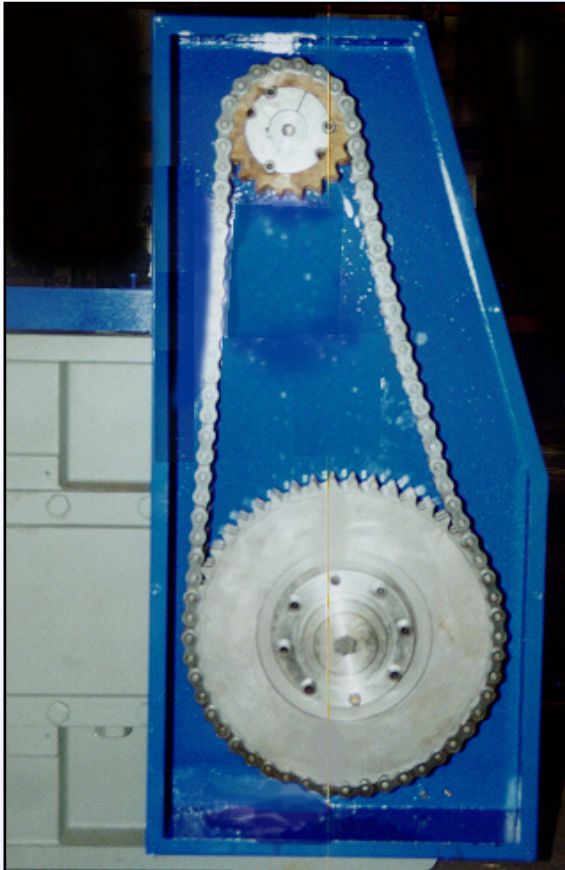
Typical Barring Drive Arrangement





The Barring Motor System

A Sterling Series Option



The **Barring Motor System** can be fitted to any of the Presses in the Sterling Series. The system consists of an auxiliary drive mounted on top of the Gearbox, it is connected to the back of a specially extended input shaft on the gearbox via a heavy duty chain and Freewheeling “Sprag” Clutch. Because the Barring Drive is slow running it develops the normal full operating torque of the Press but from a low powered geared motor

In normal Press operation, when the Press is driven by the Main Motor, the “Sprag Clutch” of the Barring system is freewheeling and the Chain and GMU are stationary. Within the clutch centrifugal force lifts the clutch elements off the rotating shaft and disengages it.

If the Press has been stopped full the Barring Drive is started. The Sprag Clutch engages and the GMU of the Barring system drives the Press. No manual adjustments or set up is required to switch from the main drive to the Barring Drive.

Typically the Press must be emptied of process material within a few minutes of the Press stopping. If it is left longer then the material will have started to bake hard and the system may not be effective.

The Barring Drive may be run from either the normal mains power supply or from an auxiliary generator. Because of the need to empty the Press quickly the mains power supply should only be used if anticipated outages will be of only a few minutes duration. Where longer power outages are expected an auxiliary generator should be used

Operation of the Barring Motor is by means of simple Start and Stop push buttons on the main Press Panel. An Ammeter is provided to monitor the operation of the Barring Drive.

For safety the Barring motor is fully interlocked with the main Press Drive to prevent it running while the main drive is running.

