

Sealing Rings

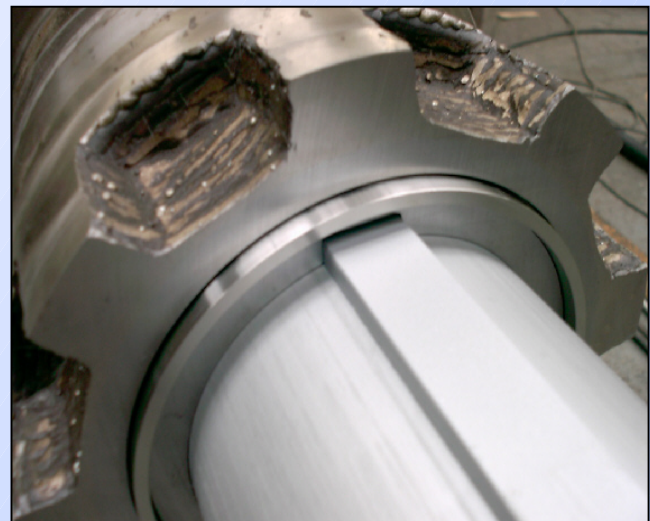
Preventing Seized Parts and Shaft Damage



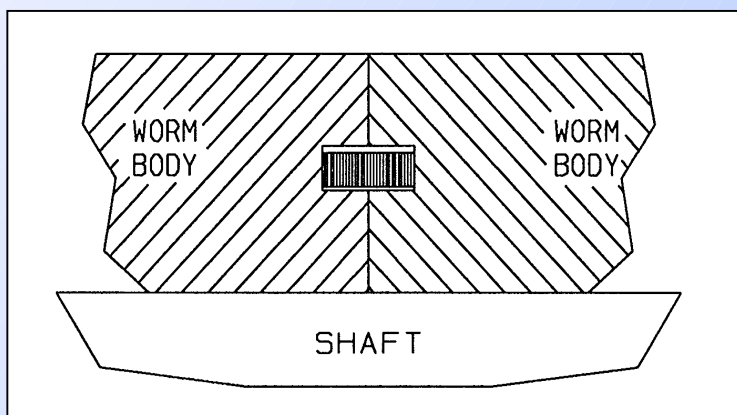
If the Oil or Fat starts to track between the parts it is deflected into the void in the ends of the part by the Sealing Ring. The capillary action is stopped and the material bakes hard further building up the seal.

Sealing Rings are stainless steel rings that are fitted in to grooves machined into the end faces of the Worm Assembly Parts.

The Sealing Ring forms a Labyrinth Seal to prevent the process material from tracking between the Worm Assembly Parts to the Shaft where it can cause corrosion of the Shaft and seizure of the Parts.



Unlike most seals fitted between Worm Assembly Parts the Sealing Rings are reusable and effective. They are also quickly and easily fitted and no special tools are required.



Sealing Rings can be fitted to many, but unfortunately not all worm Assemblies.

If you are not yet using them contact us to see if we can supply you with Parts that prevent damage to your Press and save you time when they need to be removed from the Press